



2024  
ENTRANT

## Entry 12

### Best Straight Stairway - Modern

**Aesthetic Value:**

double steel stringer with block treads and glass panels

**Stair Safety:**

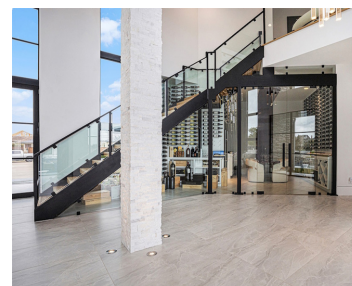
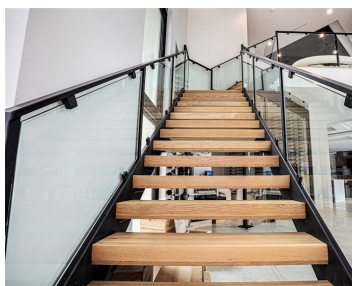
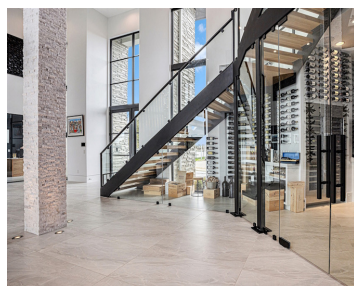
everything was installed at code with proper riser and rail heights.

**Quality of Workmanship:**

We ended using all steel rectangular tube for the stringer with white oak butcher block treads and 1/2" tempered glass

**Technical Challenge:**

this was not on the plan so we had to figure out what was the best possible way since this had a wine room underneath the staircase.



NOTE: Entry met the code as enforced in the local jurisdiction.





2024  
ENTRANT

## Entry 13

### Best Straight Stairway - Modern

#### Aesthetic Value:

This unique stair has stainless steel mesh risers that we integrated into the plate steel stringers and maple wood treads

#### Stair Safety:

The code compliant handrail mounts on top of stainless-steel pegs. Each section of rail is modular and mounts on to the side of the plate steel stringer

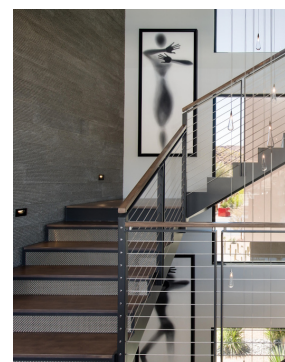
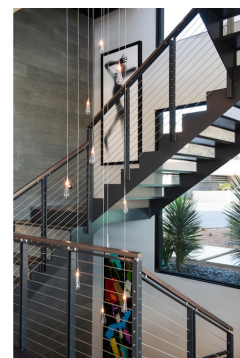
#### Quality of Workmanship:

This stair is 3 stories high. All 3 flights are suspended perfectly over top of one another.

#### Technical Challenge:

If you look closely, one of the faces of the stair has a mesh screen that spans all 3 stories and integrates into the stair well. That was part of the stair install.

NOTE: Entry met the code as enforced in the local jurisdiction.







2024  
ENTRANT

## Entry 14

### Best Straight Stairway - Modern

#### Aesthetic Value:

With a simple and elegant design, ingeniously integrating a drawer system for efficient storage and providing a practical and stylish seating space, the glass balustrade adds a contemporary touch

#### Stair Safety:

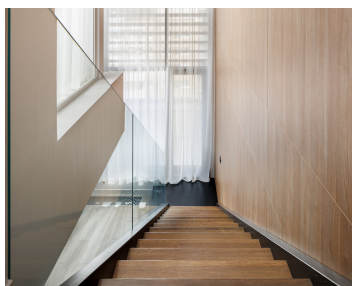
The stair respects national standards

#### Quality of Workmanship:

Premium 60mm oak, top finishing solutions, best glass quality.

#### Technical Challenge:

Dimensions of the platform and fixturing system was the challenge for this project



NOTE: Entry met the code as enforced in the local jurisdiction.





2024  
ENTRANT

## Entry 15

### Best Straight Stairway - Modern

#### Aesthetic Value:

A sinuously compact, true jewel box of a staircase. Mid century styling blends silicon bronze, wood and gunmetal steel, featuring glamour plus practicality with a built-in bench and art drawer.

#### Stair Safety:

This stair would never have met code, so we required the architect to raise the kitchen and dining room a full 12" to ensure risers of 7 3/4" or less.

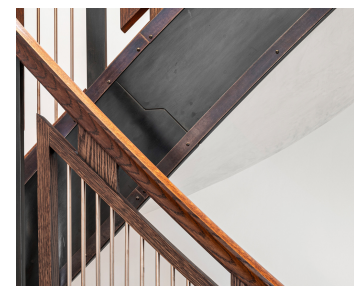
#### Quality of Workmanship:

The stair combines the best of mid century materials and design, in a combining Q-sawn W. oak, ribbon cut mahogany, Plaster soffit

#### Technical Challenge:

The impossible joint: Harry Potter style zigzag structural steel connections at the start and finish of the swirling 180° steel U-turn. Do you see the joints? Airtight tolerances.

NOTE: Entry met the code as enforced in the local jurisdiction.







2024  
ENTRANT

## Entry 16

### Best Straight Stairway - Modern

**Aesthetic Value:**

Maintaining the shadow line of the handrail consistently atop the rake wall to pony wall.

**Stair Safety:**

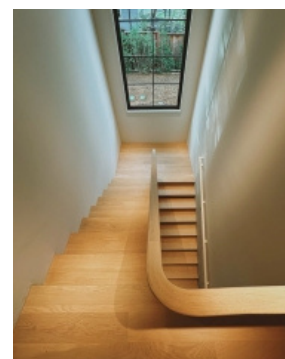
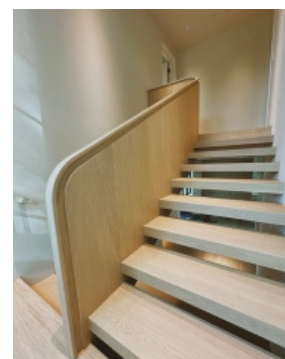
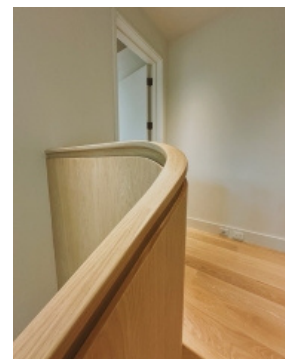
Floating treads supported by 5/8" large steel brackets.

**Quality of Workmanship:**

Top notch.

**Technical Challenge:**

Hand manufacturing the wreathed rake to level fitting



NOTE: Entry met the code as  
enforced in the local jurisdiction.





2024  
ENTRANT

## Entry 17

### Best Straight Stairway - Modern

**Aesthetic Value:**

Contemporary Modern Glass  
Design Stair and Rail

**Stair Safety:**

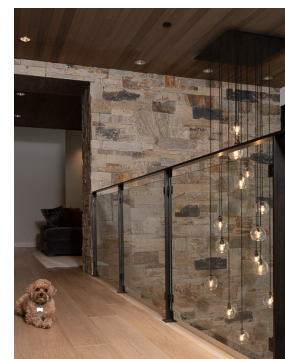
Meets all stair safety codes

**Quality of Workmanship:**

Custom Petina and Field Waxed  
Cold Drawn Steel Post and Rail.  
Premium, High End Fabricated  
Steel and Glass System with I-  
Beam Mono Stringer

**Technical Challenge:**

Custom Glass Clamps. Multi-Level  
Glass and Posts



NOTE: Entry met the code as  
enforced in the local jurisdiction.





2024  
ENTRANT

## Entry 18

### Best Straight Stairway - Modern

#### Aesthetic Value:

Simple modern flare with straight lines and floating cantilevered treads. Each tread is lit with a recessed LED light strip.

#### Stair Safety:

Complies with all aspects of the code standards.

#### Quality of Workmanship:

The project consisted of plain sawn European Oak and low iron glass. All glass mounting hardware being hidden by the wooden tread end caps.

#### Technical Challenge:

Hidden steel supports and plates create a floating look. All supports and plates had to be installed and hidden within the wall cavity build out.



NOTE: Entry met the code as  
enforced in the local jurisdiction.





2024  
ENTRANT

## Entry 19

### Best Straight Stairway - Modern

#### Aesthetic Value:

The stacked boxes configuration, glass, and sleek top rail contribute to provide crisp, clean lines of this stairway. The lines throughout the landing blend seamlessly with the rest of the stair.

#### Stair Safety:

Safety glass is used along with a plowed top rail to provide a secure guard.

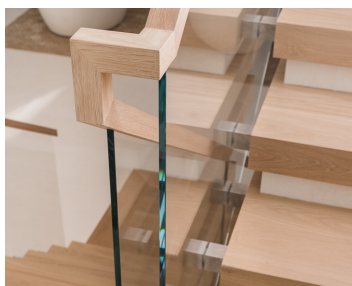
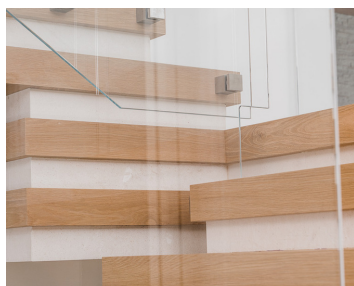
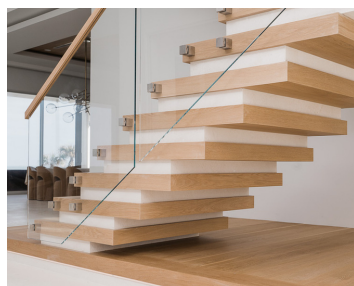
#### Quality of Workmanship:

The glass is low iron and the glass standoffs are solid 316 stainless steel.

#### Technical Challenge:

The large stacked box configuration required extensive internal components to ensure a sound structure and allowed the boxes to be assembled on site. All exposed wood was lock mitered and face grain.

NOTE: Entry met the code as  
enforced in the local jurisdiction.



BEFORE





2024  
ENTRANT

## Entry 20

### Best Straight Stairway - Modern

#### Aesthetic Value:

Mono central steel stringer to support its structure efficiently and uniformly. Subsequently, for a modern and minimalist look, we recommended glass railings and wooden steps.

#### Stair Safety:

Stringers conform to the building code and have been approved by an engineer. It complies with the building regulations of the region where it's installed.

#### Quality of Workmanship:

Each stringer is custom made thanks to a technical drawing. Steel stringer is painted (powder paint) in our factory. This one is in urban black.

#### Technical Challenge:

2 steel stringers  
First floor : Stringer with 3 winder steps and a 45° attachment.  
Second floor : Stringer in L-shaped with a 90° landing. Crossbeam at the top.

NOTE: Entry met the code as enforced in the local jurisdiction.

