



2024  
ENTRANT

## Entry 21

### Best Curved Stairway - Traditional

**Aesthetic Value:**

Staircase is main focal point of the home. Running from garage level to rooftop, 4 stories.

**Stair Safety:**

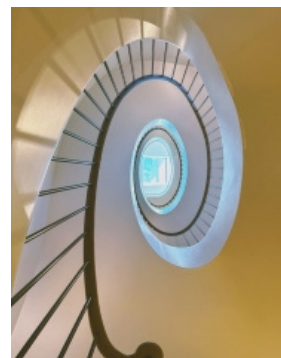
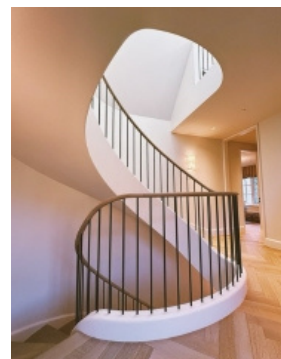
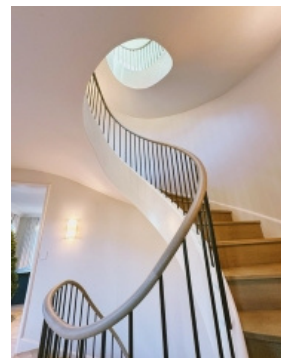
Being elliptical achieving a consistent 10" run at path of walk. Legal rail heights.

**Quality of Workmanship:**

Collaboration with fellow SMA member, highest quality wreathed handrail parts. Pristine details for a multi-million dollar home in San Francisco's Pacific Heights neighborhood.

**Technical Challenge:**

Laying out the steel beams to support landings during the rough framing of the house and craning in the stringers.



NOTE: Entry met the code as enforced in the local jurisdiction.





2024  
ENTRANT

## Entry 22

### Best Curved Stairway - Traditional

#### Aesthetic Value:

The freestanding stair provides elegant, sweeping curves as it passes in front of the windows of this curved stair tower. The handrail flows seamlessly throughout all floors.

#### Stair Safety:

The handrail provides uninterrupted graspability as you traverse the various flights. Walkline remains consistent throughout bowed winders.

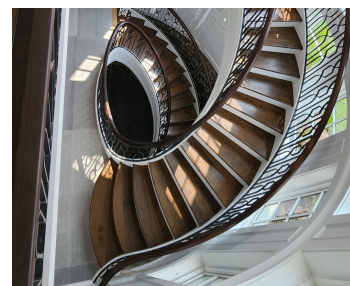
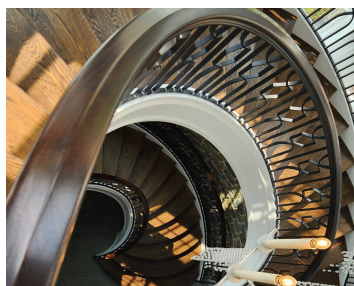
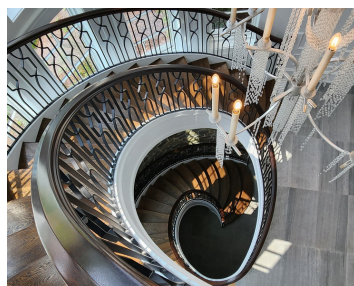
#### Quality of Workmanship:

The all wood carriage has embedded steel brackets to secure the stair to the structure at the top and base headers. Balusters were custom made at our machine shop.

#### Technical Challenge:

The balusters were machined with slots to slide two halves together without any welds for a very crisp look. The handrail was made with many custom wreathed fittings throughout various pitch changes.

NOTE: Entry met the code as enforced in the local jurisdiction.







2024  
ENTRANT

## Entry 23

### Best Curved Stairway - Traditional

**Aesthetic Value:**

Flowing curves and traditional balusters make a statement in the space. Flowing into rather than just filling it.

**Stair Safety:**

The walk line of this stair and baluster was carefully planned to comply with code.

**Quality of Workmanship:**

A flowing rail system with climbing volutes completes the package for this beautifully curved stairway. Solid hardwood rails and treads combined with metal balusters creates a picture of elegance.

**Technical Challenge:**

The stringers, top, and lower mounting was designed to provide for a rigid structure with no bounce. Careful attention was paid to ensure all radiused parts followed the perfect path.

NOTE: Entry met the code as  
enforced in the local jurisdiction.







2024  
ENTRANT

## Entry 24

### Best Curved Stairway - Traditional

**Aesthetic Value:**

Sweeping Modern Staircase  
featuring a Nautical Aesthetic

**Stair Safety:**

Meets all Codes

**Quality of Workmanship:**

Highest Quality of Steel and  
Hardwood Products

**Technical Challenge:**

Radius Steel Rod Application

NOTE: Entry met the code as  
enforced in the local jurisdiction.

