



2024  
ENTRANT

## Entry 04

### Best Balustrade



#### Aesthetic Value:

Each baluster gives added value and character to each staircase. Steel balusters in urban black from Prestige Metal.

#### Stair Safety:

According to the Code, this railings take the form of a banister with vertical balusters B012 and T010 from Prestige Metal.

#### Quality of Workmanship:

All our balusters are painted in our factory. Dry powder paint is heat cured to high intensity. It covers uniformly and hides traces of welding and sanding. Durable, scratch-resistant finish.

#### Technical Challenge:

Railing with steel balusters.

NOTE: Entry met the code as enforced in the local jurisdiction.





2024  
ENTRANT

## Entry 05

### Best Balustrade

#### Aesthetic Value:

Custom iron balustrades as the focus of the entry and great room. The gold leaf accents compliment the many other gold features throughout the residence.

#### Stair Safety:

Guard height was raised slightly from the original to bring the handrail height to current codes.

#### Quality of Workmanship:

The custom iron balustrade provides a sturdy guard and dramatic aesthetics to this previously plain foyer.

#### Technical Challenge:

This was a collaboration between designer and stair builder. Initial design was from very general direction by the designer followed by several tweaks with direction from the designer and owner.



NOTE: Entry met the code as enforced in the local jurisdiction.





2024  
ENTRANT

## Entry 06

### Best Balustrade

**Aesthetic Value:**

Unique, Modern, Stylish

**Stair Safety:**

Meets all safety standards

**Quality of Workmanship:**

Premium Quality Fabricated Steel  
Glass Frames-powder coated to  
the highest standards

**Technical Challenge:**

Design, Layout, and Installation



NOTE: Entry met the code as  
enforced in the local jurisdiction.





2024  
ENTRANT

## Entry 07

### Best Balustrade

#### Aesthetic Value:

Modern straight balustrade with industrial vibes. The inclusion of glass panels with straight steel supports creates a look both monumental and open.

#### Stair Safety:

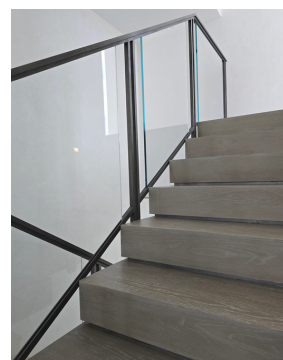
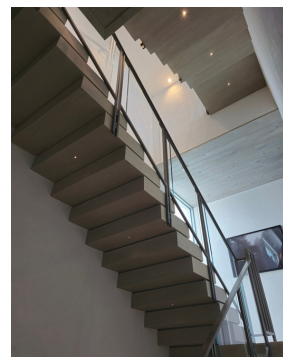
Complies with all codes and far exceeds all code required loads.

#### Quality of Workmanship:

Natural steel finish, all welds are ground absolutely smooth and flush with all finishes blended. Each post has a machined step on the bottom tip and glass grooves were machined into the steel.

#### Technical Challenge:

Designing a rail system that could be built of site with a detachable rail for access to install the glass was a challenge. The pieces had to be manageable to lift to install the glass.



NOTE: Entry met the code as enforced in the local jurisdiction.