



2022 ENTRANT

Entry 43

Best Curved Stairway - Modern

Aesthetic Value:

The lines and curves provide a very dynamic shape that flows very gracefully. Contrasting materials are interesting and pleasing.

Stair Safety:

This massive rail has a very graspable shape. Rise run ratio is comfortable and safe to walk.

Quality of Workmanship:

No kinks or bumps in the flowing mahogany handrail. Rail joints are perfect and plaster work matched the quality of the stair.

Technical Challenge:

The engineering and fabrication of the steel structure was amazing. No field welding done. It was all bolted in a steel stave design. Getting the rail just right was an installation challenge.

NOTE: Entry met the code as enforced in the local jurisdiction.



2022 ENTRANT

Entry 44

Best Curved Stairway - Modern

Aesthetic Value:

Mid Century Modern

Stair Safety:

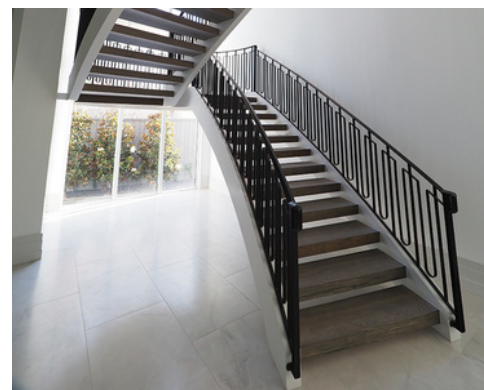
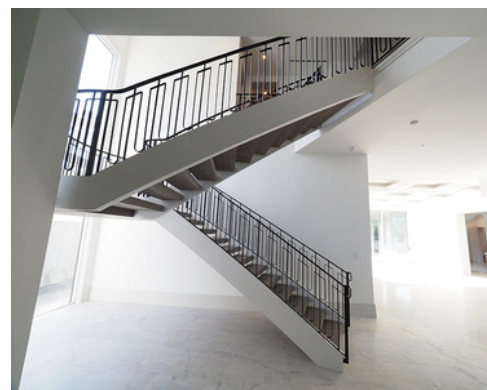
Stair Meets all residential code requirements.

Quality of Workmanship:

All curved steel structure, full floating. Fully trimmed stringers. Seamless white oak treads with embedded lights under the nose. Custom ornamental steel railing.

Technical Challenge:

The floating half circle landing with no visible supports



NOTE: Entry met the code as enforced in the local jurisdiction.



2022 ENTRANT

Entry 45

Best Curved Stairway - Modern

Aesthetic Value:

Modern freestanding curved bridal stairways create wow factor and set the tone as you step inside the front door. Powder coated iron, stainless steel, and wood contrast and accent the column lighting.

Stair Safety:

Riser spacing is kept below 4" on this open rise stair and the horizontal bar balustrade provides a secure guard while adhering to sphere codes.

Quality of Workmanship:

Curved iron mono-beams have internal webbing to ensure structural integrity. Treads are solid white oak and vertically laminated.

Technical Challenge:

Powder coated posts are custom machined to receive the Stainless horizontal bars with rubber applied to the holes to provide a tight fit between the Stainless bars and iron posts.



NOTE: Entry met the code as enforced in the local jurisdiction.



2022 ENTRANT

Entry 46

Best Curved Stairway - Modern

Aesthetic Value:

Double Freestanding Curve Staircases with custom metal scroll panels manufactured and installed. Panel design incorporates front door metal style.

Stair Safety:

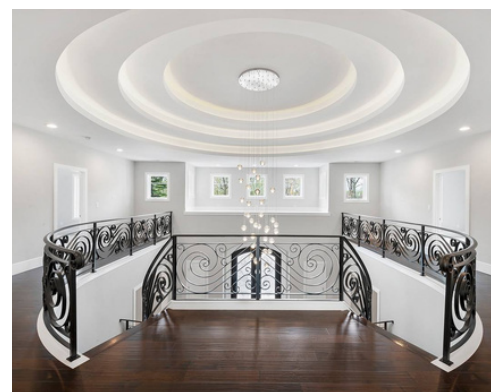
Heavy duty steel design meets all building codes.

Quality of Workmanship:

Every piece hand crafted with rail panels bent and welded in-house

Technical Challenge:

The stairs themselves were not difficult, for the rail, we were asked to incorporate the design of the ironwork on the front door. Creating the curved scroll panels was challenging.



NOTE: Entry met the code as enforced in the local jurisdiction.



2022 ENTRANT

Entry 47

Best Curved Stairway - Modern

Aesthetic Value:

A major focal point in the home, this buttress style stair with curved fascia uses Metro Rail White Oak, White Oak treads, and Black Harmony balusters. Looks great and fits well in space.

Stair Safety:

All local codes

Quality of Workmanship:

5 Year Warranty

Technical Challenge:

Bringing the stair in at the proper time of construction process. It required more coordination than normal because of site conditions.

NOTE: Entry met the code as enforced in the local jurisdiction.