



2022 ENTRANT

Entry 37

Best Curved Stairway - Traditional

Aesthetic Value:

This freestanding stair flows with grace and an even pitch throughout.

Stair Safety:

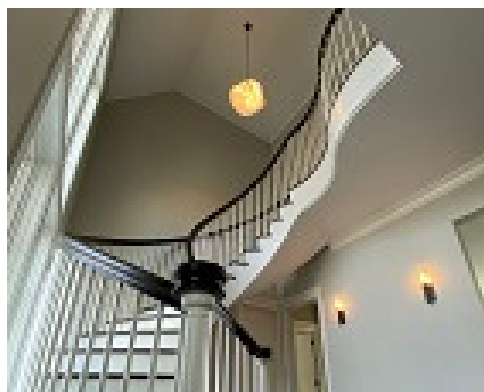
Consistent run at both inside and outside walk-lines.

Quality of Workmanship:

All custom balustrade components cut in the tangent handrail method. The stair has shop applied finishes.

Technical Challenge:

Getting a long curved into the house. Free standing structure.



NOTE: Entry met the code as enforced in the local jurisdiction.



2022 ENTRANT

Entry 38

Best Curved Stairway - Traditional

Aesthetic Value:

Freestanding bridal stairways provide tremendous drama to this expansive foyer. The ornamental iron contrasts with the wood and painted components to establish a Mediterranean flavor to this home.

Stair Safety:

The freestanding mid-landing breaks up the extra high floor to floor of these stairs. The continuous rail through the landing on the outside provides uninterrupted continuity beyond code requirements.

Quality of Workmanship:

Internal structural steel at the landing and upper flight were done in-house. Special attention to layout provides continuous stringers and rail through the landing transitions.

Technical Challenge:

Challenges included engineering the lower flights, common mid-landing, and single upper flight to all be freestanding and secured only to the side of the balcony bridge.

NOTE: Entry met the code as enforced in the local jurisdiction.





2022 ENTRANT

Entry 39

Best Curved Stairway - Traditional

Aesthetic Value:

With a ceiling height of over 35', we needed a large stair that fit this huge foyer. The massive steps and newel post helped to emphasize this GRAND entry staircase

Stair Safety:

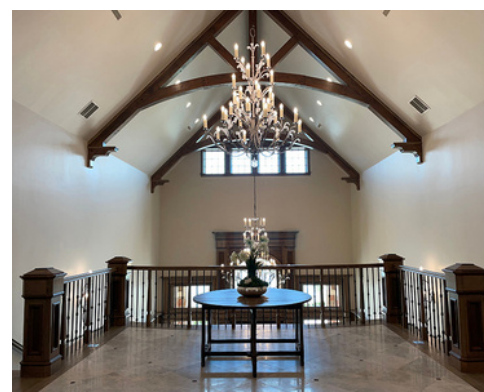
Complied with local code restrictions

Quality of Workmanship:

This stair brought together many different materials. We used a combination of White Oak and Walnut, tile, and both wood and metal balusters.

Technical Challenge:

Working with other trades, we were able to ensure that the details in the staircase complimented the details in the surrounding trim and tile work.



NOTE: Entry met the code as enforced in the local jurisdiction.



2022 ENTRANT

Entry 40

Best Curved Stairway - Traditional

Aesthetic Value:

22 rise double freestanding with quarter sawn white oak treads

Stair Safety:

3.5" oversized Georgian rail at 36" rake height. Double doglegs- freestanding

Quality of Workmanship:

Custom turned 2.5" balusters with custom 7" recessed panel box newels

Technical Challenge:

The stair has 9 foot double doglegs that connect to the steel beams



NOTE: Entry met the code as enforced in the local jurisdiction.



2022 ENTRANT

Entry 41

Best Curved Stairway - Traditional

Aesthetic Value:

Created a flowing staircase with the lower level being a traditional stain and the upper with a modern touch.

Stair Safety:

Hidden landings were included at the top of each staircase, making them Code Compliant.

Quality of Workmanship:

The stringer and handrail were mortised top and bottom to achieve the proper radius and correct fit on the factory balusters.

Technical Challenge:

By utilizing a 4 1/2" buttress stringer, the walk line was adjusted and only add 2" to the total length of the staircase with the required landing.



NOTE: Entry met the code as enforced in the local jurisdiction.



2022 ENTRANT

Entry 42

Best Curved Stairway - Traditional

Aesthetic Value:

This three-story curved staircase is the perfect example of form following function. It consists of white oak treads, custom metal balusters and a white oak handrail.

Stair Safety:

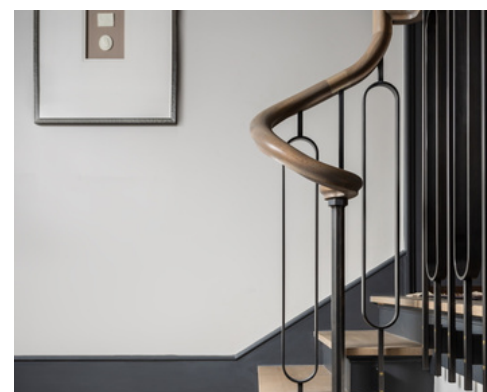
The stair lighting is a perfect accent for functionality and performance while still maintaining elegance.

Quality of Workmanship:

Over 1500 hours were spent on this project between scratching our heads, engineering, fabricating and installation.

Technical Challenge:

We had to fly structural steel and curving staircases in from the busy streets of downtown Greenville to the fourth-floor window of a residential apartment using a crane.



NOTE: Entry met the code as enforced in the local jurisdiction.