



2022 ENTRANT

Entry 16

Best Stairway Renovation

Aesthetic Value:

Modern. Minimal. Elegant. The striking, sophisticated system is a functional art piece. Done away with frills and pompousness, the stairs serve as its own statement - genteel and offering exclusivity.

Stair Safety:

Solid infill, 8x10 stringer tube, 42" Guardrail with ADA Compliant 36" grabrail, laminated glass panels for commercial strength and reduced gaps, imbedded steel strips and wirebrushed 66" treads

Quality of Workmanship:

Client has significant control over design choices, SGP Laminated Panels, Black anodized handrail, solid wood treads, precision cuts, engineered and fabricated offsite, manufactured in US, hand sanded

Technical Challenge:

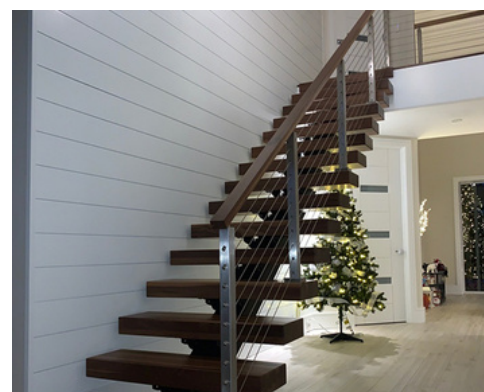
Remodeling projected with hard to obtain dimensions, embedded steel structure, commercial project with customer provided plinth, new concept of embedded baserail, continuous handrail with no fittings



BEFORE



BEFORE



NOTE: Entry met the code as enforced in the local jurisdiction.



2022 ENTRANT

Entry 17

Best Stairway Renovation

Aesthetic Value:

This was a great modernization for this house. We ripped out all the old wood rail and balusters and installed a clean steel and glass handrail system. Really opened up the home.

Stair Safety:

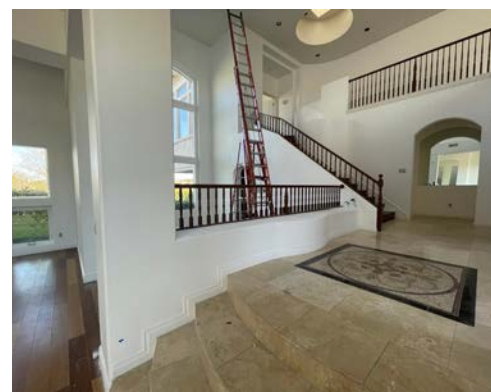
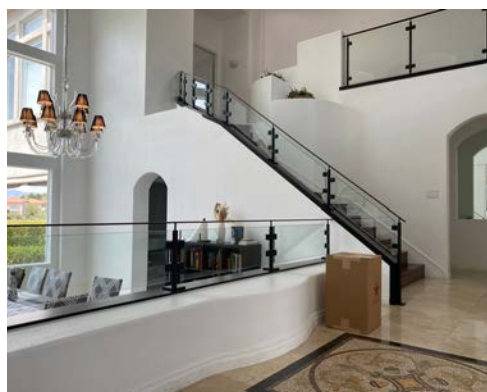
We used a 2"x1/2" steel flat bar for the top rail that meets the code requirements for handrail grasp ability.

Quality of Workmanship:

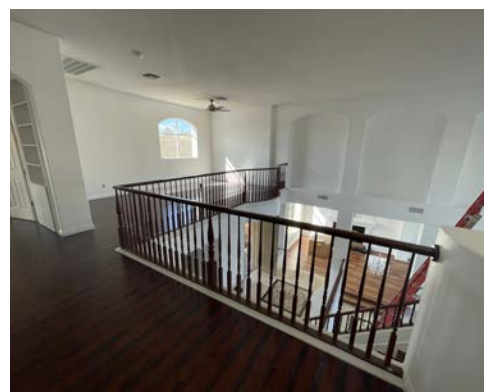
The stain color in the hard maple cap came out really nice and made the woodwork pop on this one.

Technical Challenge:

This one would have been really nice with some curved glass in there, but it just wasn't in the budget. We had to break up the curved runs with straight pieces of glass. Maybe next time.



BEFORE



BEFORE

NOTE: Entry met the code as enforced in the local jurisdiction.



BEFORE



2022 ENTRANT

Entry 18

Best Stairway Renovation

Aesthetic Value:

Project consisted of the removal of existing stairs and half walls, and replacing with Maple staircase and rail with black metal balusters. All wood stained to color match current flooring.

Stair Safety:

Meets all applicable building codes

Quality of Workmanship:

Custom crafted Maple stair is solidly built and finished beautifully.

Technical Challenge:

Removing the half walls and installing the new staircase and rails, finishing to look as if it were the original design.

NOTE: Entry met the code as enforced in the local jurisdiction.



2022 ENTRANT

Entry 19

Best Stairway Renovation

Aesthetic Value:

The clients desire was for their "new stair" be an exact match to the 3 other stairs in the house which were custom built 35 years ago. We machined all the stair components to be an exact match.

Stair Safety:

The stair, even with such a tight radius, has a 7.5" unit rise and a 10.5" unit run at the travel line. We replicated the rail profile but reduced the width to comply to the code.

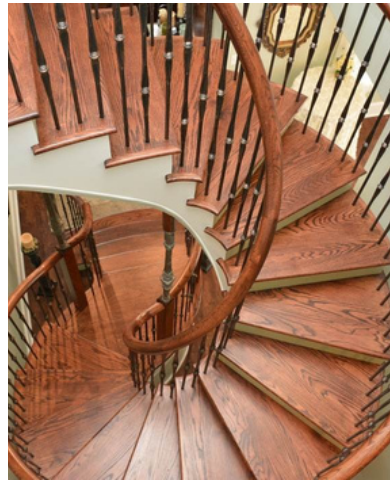
Quality of Workmanship:

Great care was taken to match color and grain. The inside stringer face was one piece with no interruption of grain.

Technical Challenge:

The existing straight L-shaped stair was removed to make room for an elevator and we designed an elliptical stair to fit in the space that was left. The tightest inside radius was 2.75".

NOTE: Entry met the code as enforced in the local jurisdiction.



CONCEPT



2022 ENTRANT

Entry 20

Best Stairway Renovation

Aesthetic Value:

To duplicate a stair with a much smaller area of a grand foyer. The focal point of the 1920 home converted into a wedding venue.

Stair Safety:

All codes accomplished and safety meet. Stair has had as many as 25 people on the stairs at one time for photo's.

Quality of Workmanship:

Custom red oak treads and rails - Over-the-post rail system with metal balusters and newel post. Building the stair in such a small area to look like it was made for the foyer.

Technical Challenge:

Placing wood newel post with metal newel post installed in some areas to help with supporting the stairway.

NOTE: Entry met the code as enforced in the local jurisdiction.