



2022 ENTRANT

Entry 29

Best Straight Stairway - Modern

Aesthetic Value:

The perfect mix between luxury and nature. Central string made out of 200mm thick premium grade solid oak, treads with an authentic look made out of 100mm thick oiled old oak,

Stair Safety:

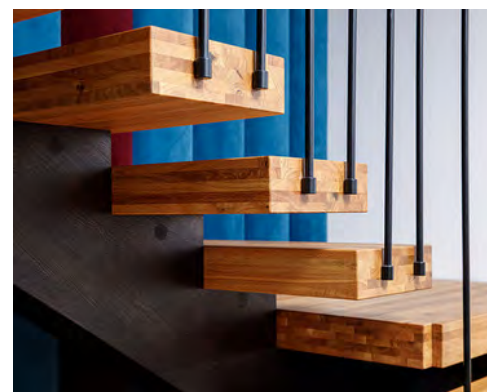
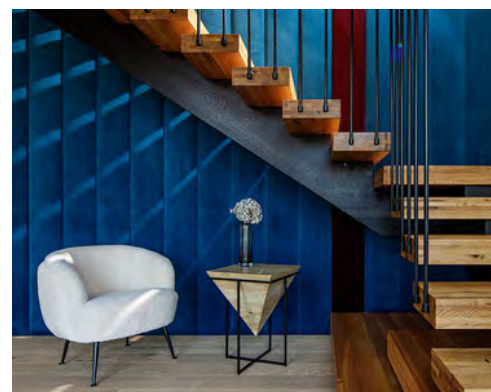
The stair respects the EU standards, handrail was removed from the project by the owner after installation and we will integrate something into the textile wall

Quality of Workmanship:

Every detail of the stair was custom made, the iron balusters, fastening solutions...everything was drew, machined and painted manually. High quality wood, hidden fastening solution.

Technical Challenge:

Solid oak = heavy stair, finding technical solution to join the strings together, installation that forced us to create lifting devices and doing that with huge attention on details



NOTE: Entry met the code as enforced in the local jurisdiction.



2022 ENTRANT

Entry 30

Best Straight Stairway - Modern

Aesthetic Value:

These stairs are constructed with 3" Sapele Treads, mounted on a steel mono-beam. The stairs were finished off with Stainless Steel Cable Railings. Blends beautifully with the home.

Stair Safety:

This super strong mono-beam design meets all applicable building codes.

Quality of Workmanship:

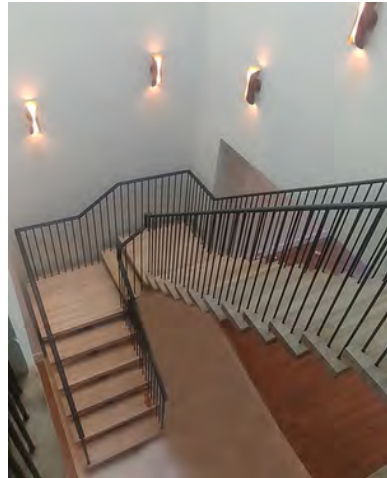
All the parts in this project are custom made in-house.

Technical Challenge:

The toughest bit of this was tying the landing into the window outcrop.



NOTE: Entry met the code as enforced in the local jurisdiction.



2022 ENTRANT

Entry 31

Best Straight Stairway - Modern

Aesthetic Value:

Created a clean open view that complimented the design and architecture of the rest of the home. A powerful image when you walk through the front door.

Stair Safety:

Complied with local code restrictions.

Quality of Workmanship:

This stair was built completely on site by our experienced craftsmen. Every detail is visible from every angle so quality was a must.

Technical Challenge:

All of the metal was finished with a bluing process, rather than being painted. This meant that we could not grind any cuts or welds. Everything had to be done perfect the first time.

NOTE: Entry met the code as enforced in the local jurisdiction.



2022 ENTRANT

Entry 32

Best Straight Stairway - Modern

Aesthetic Value:

This modern home has huge vaulted ceilings, floor to ceiling windows and concrete floors that lend cool tones throughout the home. A floating glass stair system amplifies the natural light perfectly.

Stair Safety:

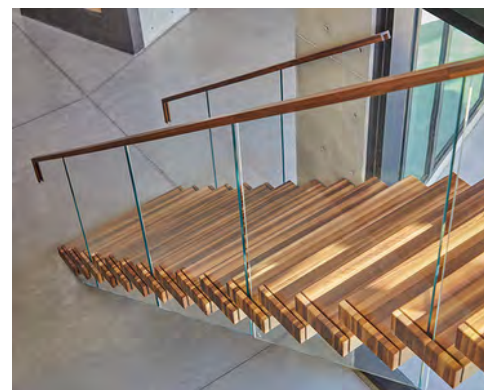
Solid, clear infill ensures a secure walkway without the view restriction of a knee wall or balusters or even cable. Handrail is fully graspable.

Quality of Workmanship:

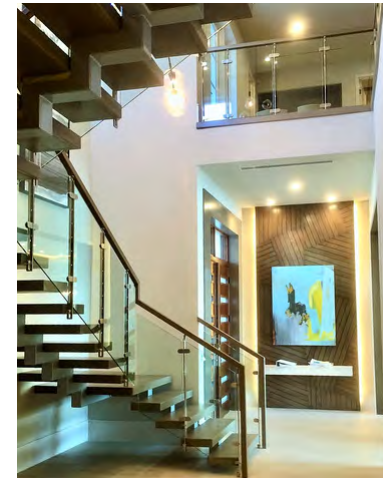
Emphasized grain patterns with a clear coated finish. When wood end caps are matched with the same tread they are cut from, glass seems to slice through the treads for a signature look.

Technical Challenge:

Measurements are sent in electronically; the treads and glass are designed remotely and shipped to the location.



NOTE: Entry met the code as enforced in the local jurisdiction.



Entry 33

Best Straight Stairway - Modern

Aesthetic Value:

Modern Design with the perfect combination of Glass, Stainless Steel and Wood.

Stair Safety:

The supporting walls are solid structural concrete. The staircase and platforms are attached at multiple points.

Quality of Workmanship:

Prefinished White Oak Treads & Handrail with a Powder Coated Steel Mono Stringer. Laser cut brushed stainless steel posts. Tread structural supports are hidden inside of each tread.

Technical Challenge:

The technical challenge was maintaining the specified design but also hiding the different structural supports.

NOTE: Entry met the code as enforced in the local jurisdiction.



2022 ENTRANT

Entry 34

Best Straight Stairway - Modern

Aesthetic Value:

The combo of Plain Sawn White Oak rail, Starphire Ultra Clear Glass, Rift and Quarter Sawn White Oak 4-1/8" thick laminated treads, and white powder coat Mono Stringer.

Stair Safety:

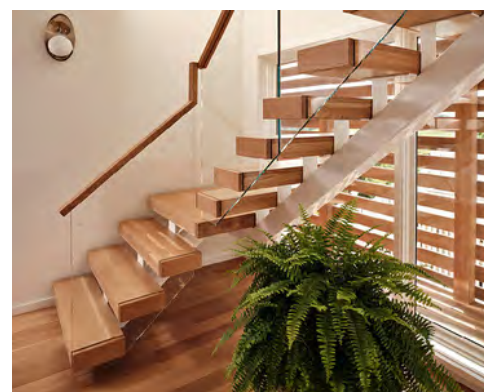
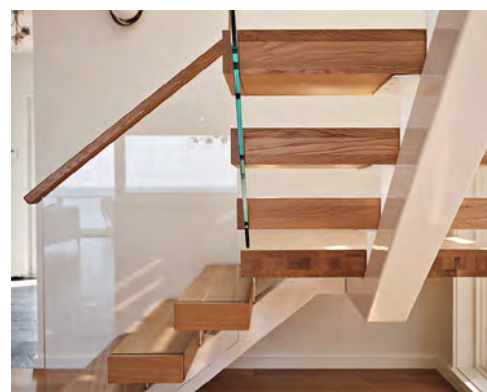
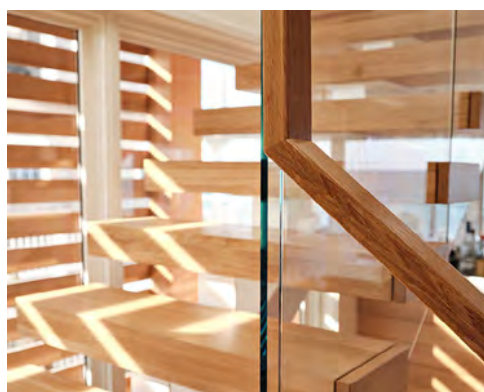
All local codes; 3-7/8" space between treads

Quality of Workmanship:

5 Year Warranty

Technical Challenge:

Working with contractor on all connection points. Floor and headers reinforced to handle the weight.



NOTE: Entry met the code as enforced in the local jurisdiction.



2022 ENTRANT

Entry 35

Best Straight Stairway - Modern

Aesthetic Value:

This one was a lot of fun. You've gotta look close to really appreciate it though. Upon examination you will realize that there is no support for that landing.

Stair Safety:

That's a 10x10x1/2" Steel stringer that connects to the concrete footing below and a steel beam above. Crazy thing is it had almost no bounce. It has white oak steps and railing with 1/2" Tempered glass

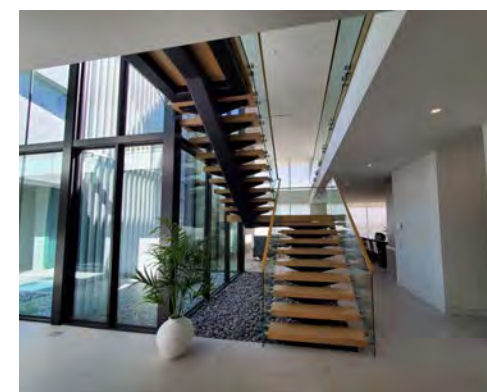
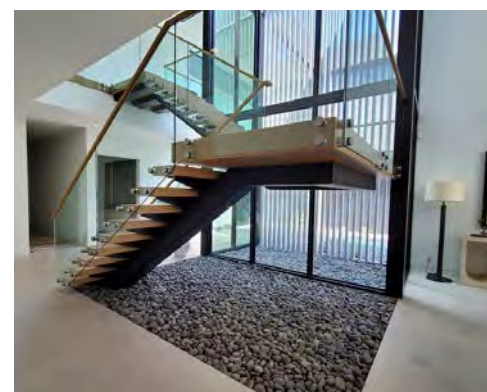
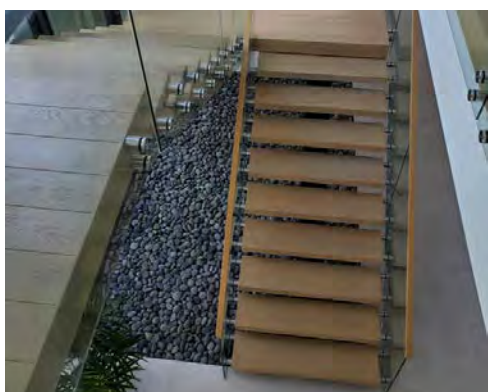
Quality of Workmanship:

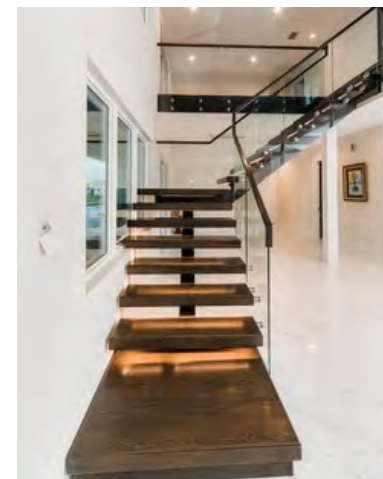
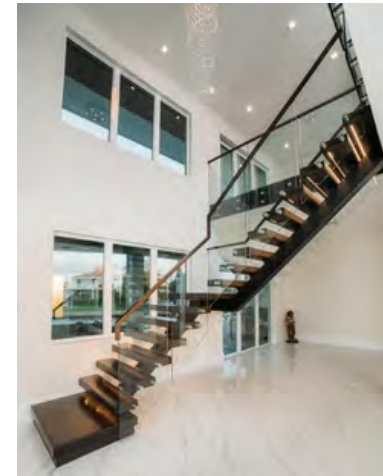
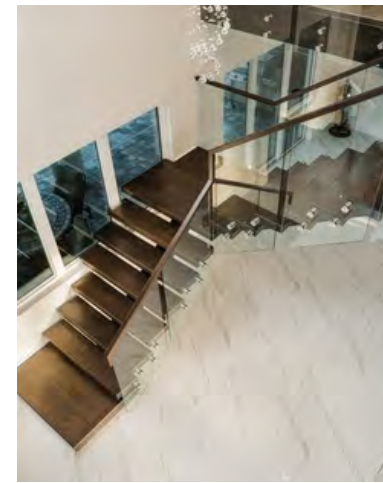
This stair really was the centerpiece for this beautiful home. All the weld miters, rail miters and finish work came out really nice on this one.

Technical Challenge:

Surprisingly, one of the hardest parts was to get that 50' long floor level section to be perfectly straight. Dealing with the fluctuations in the framing was a little tough, but it came out perfect.

NOTE: Entry met the code as enforced in the local jurisdiction.





2022 ENTRANT

Entry 36

Best Straight Stairway - Modern

Aesthetic Value:

The open rise mono-beam stairway along with the low iron glass balustrade give an open and airy feel to the foyer in this water front home. Under tread lighting adds drama to the open foyer.

Stair Safety:

1/2" tempered glass has a very open feel while providing a very secure guard. Under tread lighting provides greater visibility while traversing the stairway.

Quality of Workmanship:

Solid hardwood treads, low iron glass, 24V high output lighting, and custom steel carriage collectively create a quality focal point to this foyer.

Technical Challenge:

Concealing the daisy chained wiring inside the tube stringers and designing the mono-beams to pass in front of the window while being structurally sound and within 4" of the tempered window glass.

NOTE: Entry met the code as enforced in the local jurisdiction.